

Endee Villa III
SIRUSERI



Welcome to Endee

ENDEE PROPERTIES IS PROGRESSIVE PROPERTY DEVELOPER WITH A PROVEN TRACK RECORD WHO IS CONTINUOUSLY EVOLVING AND PERPETUALLY NEW HORIZONS HAVE RAISED YOUR STANDARDS ALL THROUGH YOUR LIFE.

The property business continues to achieve sustainable growth and profitability in all our venture projects. Endee Properties is driven by a commitment to enhancing life styles of people whom we build homes for, as well as being socially and environmentally conscious in the development of gated communities for the further generation. We are indulging in a truly global life style at an affordable cost where living life is at it's best.

We have created a bench mark for modern living covering all facets of contemporary and compact life style. We design the living environment that incorporates all the characteristics features that define a truly global life style with thorough design methodologies.



Endee Villa III

SIRUSERI

Endee Villa III is a luxury residential Villa located at Navalur Chennai , with aside lush greenery, enhanced by exclusivity, privacy, Stylish and contemporary in design. Endee Villa III comprises a total of 20 well appointed three bedrooms units.

Endee Shelters and Properties Pvt Ltd, the developer of Endee Villa III, provides you the assurance for quality and timely deliverables. Each unit is having clever allocation of space, never lacking of human inspirations, security, car park spaces, thrown in together with an exclusive after sales service.

Endee Villa III is exquisitely designed with a hot of superlative amenities and finished down to the finest detail using best construction materials.

Endee Villa III is crafted by eminent architects for ergonomics and aesthetics. Interior includes quality fittings, Modular switches, joint free tiles, well designed joinery, and walls coated with putty and emulsion.

Each Villa is enclosed with fully secured gates, covered car parking, optional individual sump and OHT and Good bore well.

The quality of our homes must enrich the quality of your life. And so our emphasis is always on effective space utilization, superior craftsmanship, personal supervision and exemplary finishes. We are a dynamic company constantly upgrading our construction techniques, design materials, specifications and amenities in order to provide our customers.

Endee Villa III is located just minutes to the conveniences. Public transport is readily available along NavalurMain Road. It takes only walk able distance to your work place at OMR. Commuting to the OMR IT corridor is convenient and easy



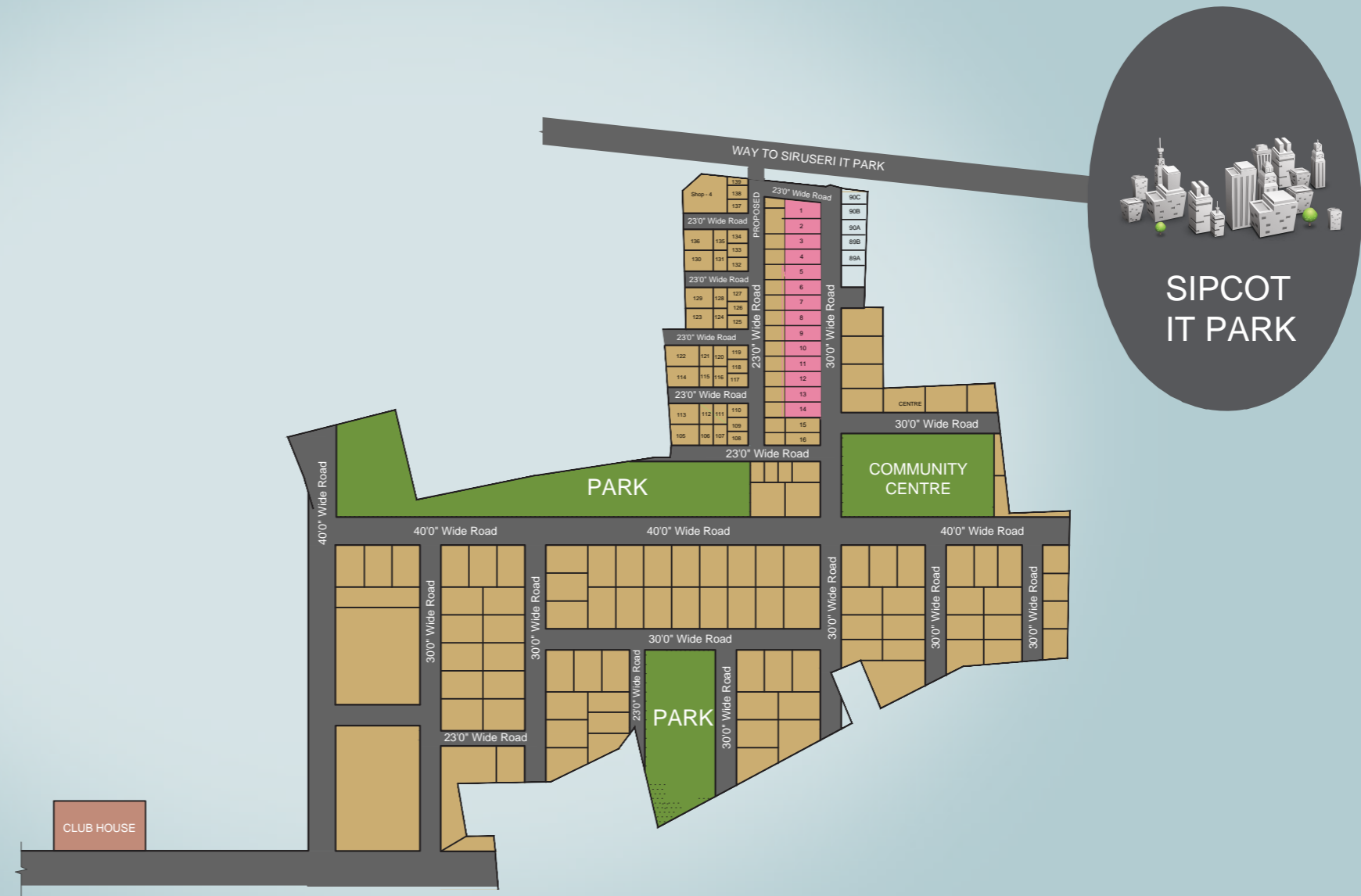
Master Plan

EXISTING FACILITIES AVAILABLE

- Grand Entrance
- Fully secured property
- Landscaped streets & green area
- Street lighting
- Black top road
- Wide road
- Water treatment plant
- Piped water supply to each plot
- Sewage treatment plant
- Storm water drainage
- Sewer line
- Duct for electrical communication cables

CLUB HOUSE FACILITIES

- Gymnasium
- Multi-purpose hall for meditation, yoga and gatherings.
- Swimming pool
- Kid's play area
- Changing room
- 100% power back-up for the club house
- Pool table
- Table tennis
- Cricket net
- Jacuzzi



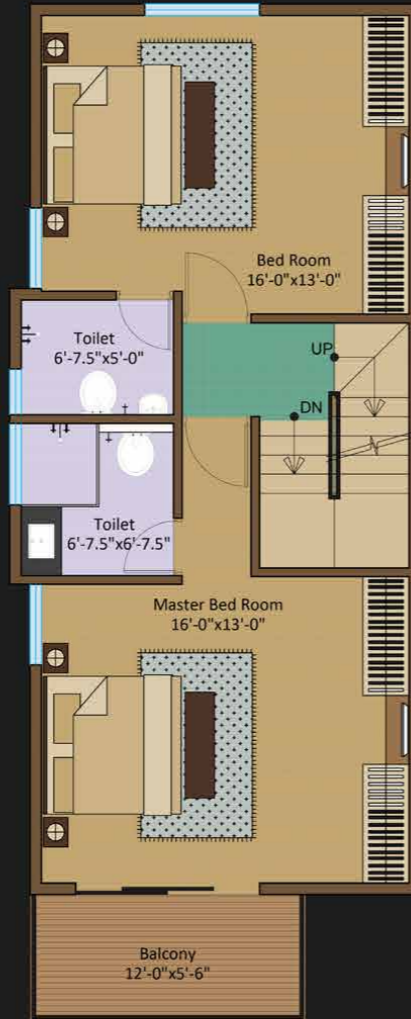


FLOOR PLANS



GROUND FLOOR PLAN

20' X 50' - FLOOR PLAN OPTION 1

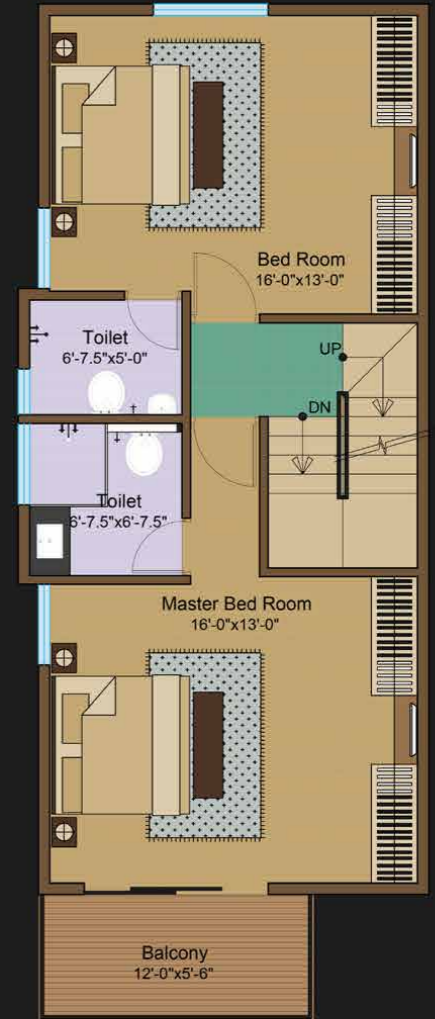


FIRST FLOOR PLAN



GROUND FLOOR PLAN

20' X 50' - FLOOR PLAN OPTION 2



FIRST FLOOR PLAN

3D PLAN



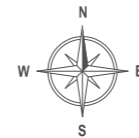
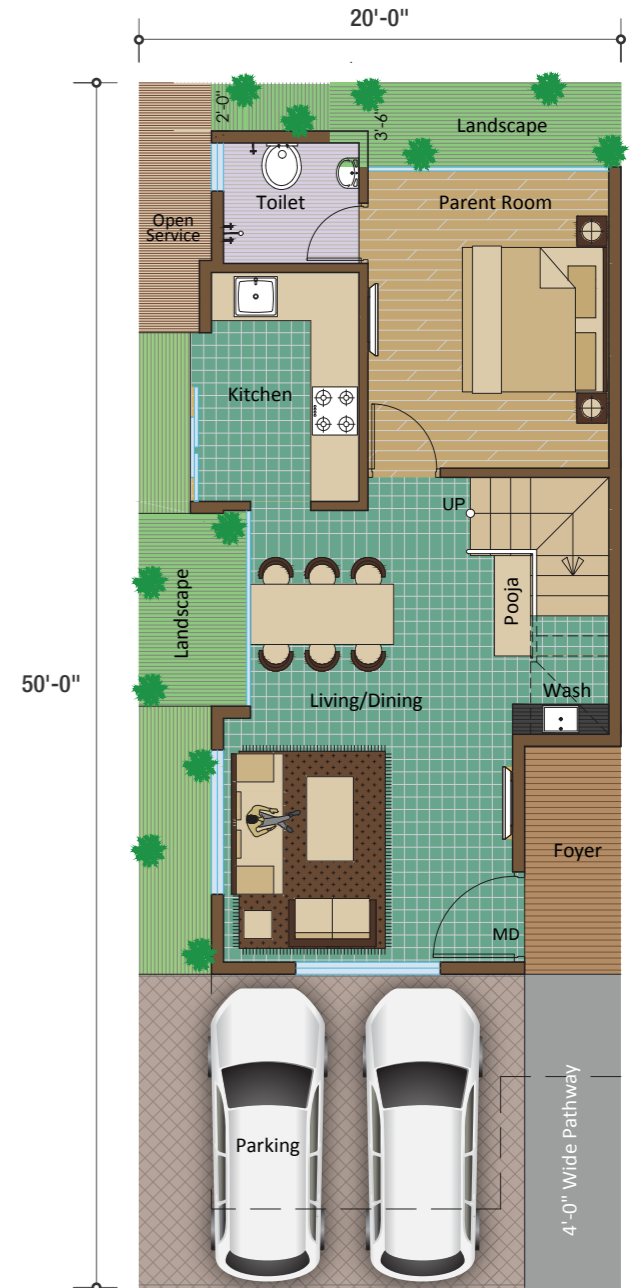
GROUND FLOOR 20Ft x 50 Ft

GARAGE	BEDS	KITCHEN
LIVING	DINING	TOILET

PARKING	16'-0"x13'-0"
BED ROOM	10'-0"x12'-6"
LIVING	12'-0"x18'-9"
KITCHEN	7'-0"x9'-6"
POOJA	6'-9"x5'-3"
TOILET	5'-7.5"x5'-0"

GROUND FLOOR PLAN

GROUND FLOOR PLAN



Ground Floor Plan

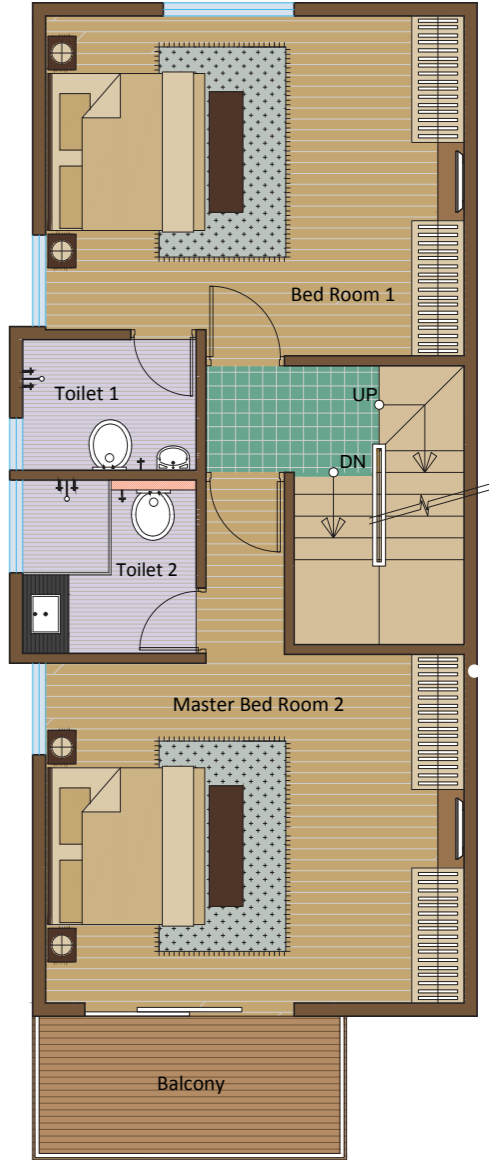
3D PLAN



FIRST FLOOR



BED ROOM 1	16'-0"x13'-0"
BED ROOM 2	16'-0"x13'-0"
TOILET 1	6'-7.5"x5'-0"
TOILET 2	6'-7.5"x6'-7.5"
BALCONY	12'-0"x5'-6"



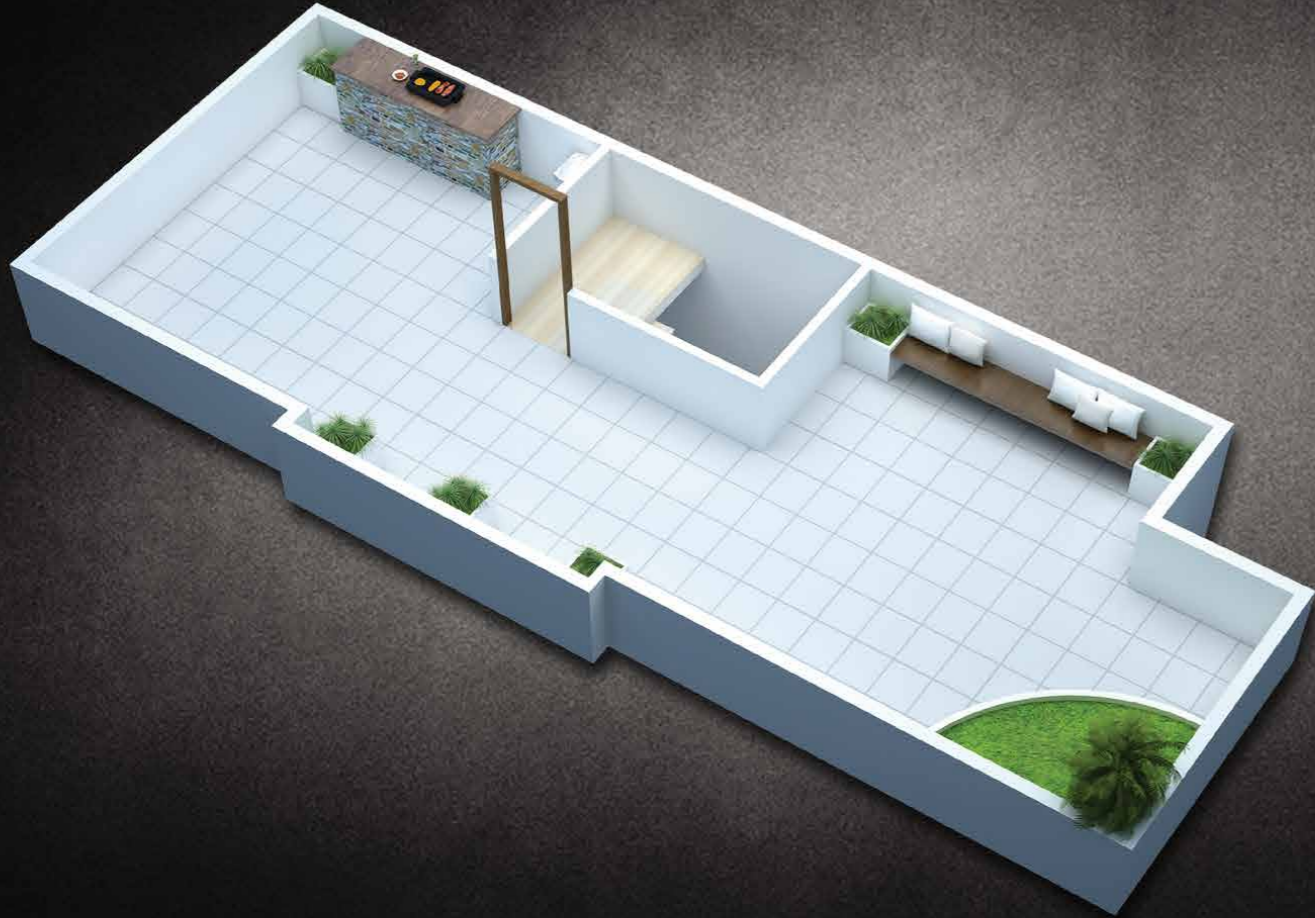
First Floor



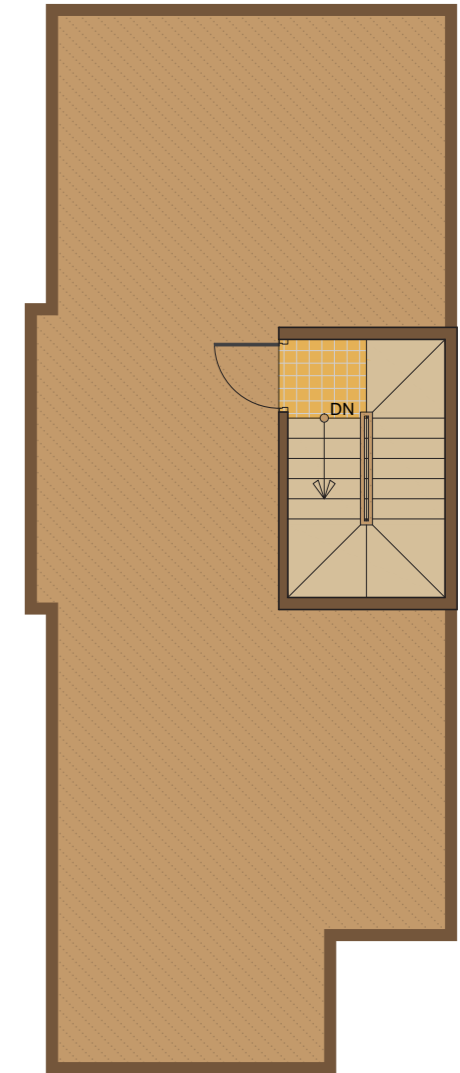
FIRST FLOOR PLAN

FIRST FLOOR PLAN

3D PLAN



TERRACE FLOOR PLAN



Terrace Floor



TERRACE FLOOR PLAN

TERRACE FLOOR PLAN

SPECIFICATION

STRUCTURE & ARCHITECTURE

- R.C.C. frame structure.
- Structure designed in accordance with solar passive principles ensuring natural ventilation & ample daylight.
- RCC Construction designed as per Earthquake Resistant Norms.

FLOORING

- Gracious white variant Vitrified flooring in the Living, Kitchen, Dining & rooms.
- 32" x 32" Vitrified Flooring in all Bedrooms.
- Anti - skid Coloured Flooring & Marbonite in all Bathrooms.
- Elegant Staircase designed in Granite & Steel for Duplexes

TOILETS

- Pressure tested Concealed plumbing for long life.
- Concealed PVC pipeline in bathrooms of Finolex brand
- Double coat water proofing with chemical treatment to all toilets and terraces.
- Attractive fittings of reputed make (Jaguar Fittings or equivalent)
- Master Toilet Suite - Imported Counter Top Wash Basin, European WC with Premium Fittings.
- Other Toilet Suites - Standard Wash Basin & European WC and fittings.
- Joint - free Ceramic Wall tiles

ELECTRIFICATION

- Shock - proof Concealed electrification with Circuit Breaker Safety System.
- Fire - retardant Copper wiring with MCB Controls.
- T.V. points in Living Room & Master Bedroom.
- Split A.C. provision master bed room
- Two - way control switches for Light and Fan

KITCHEN

- Wall Tiling up to 2 feet above Kitchen Platform.
- Well - sized Kitchen Sink.
- Plumbing and Electrical Provisions for Water Purifier System.
- Power Points for Kitchen Appliances.
- Washing Machine Provision in Utility Area

DOORS

- wide Elegant Paneled, Main Door with classy fittings.
- Premium quality Door Fixtures & Fittings.
- Internal doors, OST flush doors

WALLS & CEILINGS

- All Internal walls and ceilings finished with smooth Birla Wall putty

PAINTING

- Eco - friendly Royal shine paint in entire building ensuring minimal environmental damage.
- All Internal Walls & Ceilings in premium quality "water - resistant"
- One Coloured wall in each Bedroom.

COMMON AREAS

- Garden Tails for common areas.
- Signage and Letter Box for each house.

WINDOWS

- Superior Quality Sliding UPVC windows & Terrace Long - life bearing for all sliding doors and windows.
- Safety Window grills.

ECO FRIENDLY FEATURES

- Structure in accordance with solar passive design principles.
- Minimum common walls for maximum natural light and ventilation.
- Heat Reflective Exterior paint for better thermal insulation.
- Intelligent plumbing for effective water conservation.
- Water - saving dual flush cisterns for toilets.
- Intelligent electrical design reducing electrical load.
- Rain Water Harvesting.

GENERAL FEATURES

- Anti Termite Treatment for all the floors.
- Over Head Tank with FOC
- Path ways will be paved using Ultra tiles.
- Compound Wall in outer periphery with Gates
- Landscaping as per Architect Details.
- Granite steps for the staircase



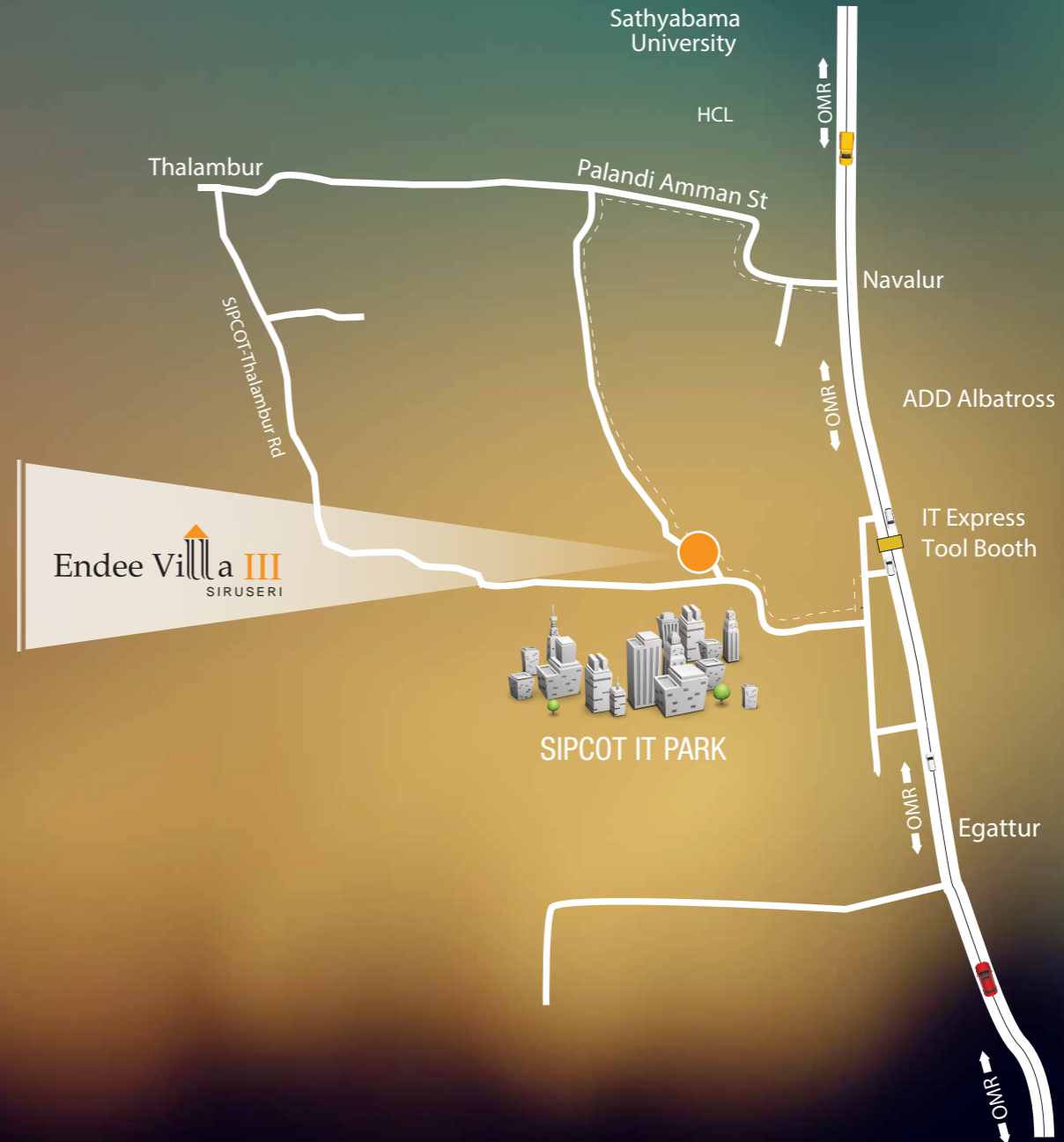
KEYPLAN

Location Highligts

ENDEE VILLA III SIRUSERI, OMR

Strategically located on **OMR** walking distance to **Siruseri SEZ zone**

Proximity to TCS, INFOSYS, Wipro Elcot, Sirucherry IT Park, Sathyabama Deemed University, Hindustan Engineering College, Schools PSBB, BVM, and shops etc. Proximity





ENDEE SHELTERS & PROPERTIES PVT. LTD

No. 92/3, BAAB Gandhi, 2nd Main Road,
Gandhi Nagar, Adayar, Chennai - 600 020

p : 044 - 2442 0008

m : 90030 96673

e : sales@endeeproperties.in

w : www.endeeproperties.in